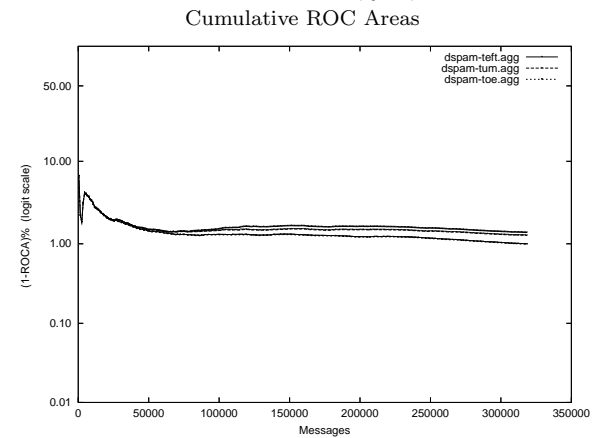
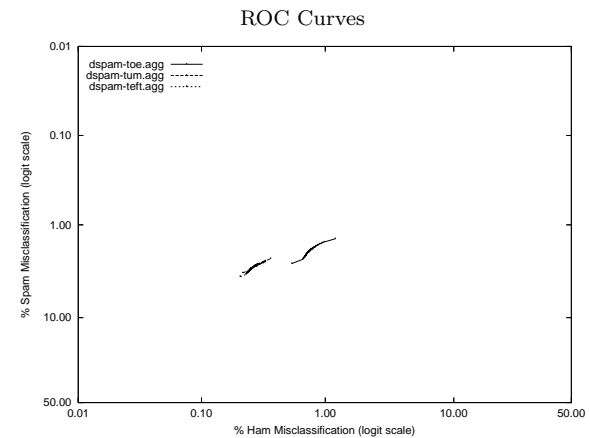


dspam - DSPAM (non-participant) on Aggregate of full, mrx, sb, tm Corpus

Gold Std. Filter Classification	dspam-teft.agg			dspam-toe.agg			dspam-tum.agg		
	ham spam	ham spam	spam	ham spam	ham spam	spam	ham spam	ham spam	spam
Ham Misc%	0.26 (0.24-0.28)			0.58 (0.55-0.61)			0.31 (0.28-0.33)		
Spam Misc%	2.93 (2.83-3.03)			1.88 (1.80-1.96)			2.57 (2.48-2.66)		
Logit av Misc%	0.87 (0.84-0.92)			1.05 (1.01-1.08)			0.89 (0.86-0.93)		
(1-ROCA)%	1.383 (1.332 - 1.436)			0.987 (0.941 - 1.036)			1.274 (1.225 - 1.325)		
Ham Misc%	Spam Misc%								
0.01	94.20 (91.70 - 95.98)			98.08 (96.83 - 98.84)			93.80 (90.61 - 95.96)		
0.02	90.77 (87.78 - 93.09)			96.31 (94.96 - 97.31)			90.03 (86.32 - 92.82)		
0.05	77.57 (72.86 - 81.66)			92.19 (90.50 - 93.61)			76.64 (71.75 - 80.91)		
0.10	51.60 (45.29 - 57.86)			83.68 (81.22 - 85.87)			51.43 (45.20 - 57.62)		
0.20	6.60 (2.65 - 15.46)			65.05 (61.61 - 68.33)			8.58 (3.65 - 18.87)		
0.50	2.57 (2.49 - 2.66)			9.19 (4.70 - 17.19)			2.35 (2.26 - 2.44)		
1.00	2.56 (2.47 - 2.64)			1.54 (1.46 - 1.61)			2.34 (2.25 - 2.42)		
2.00	2.54 (2.45 - 2.62)			1.42 (1.35 - 1.49)			2.32 (2.23 - 2.41)		
5.00	2.45 (2.37 - 2.54)			1.38 (1.31 - 1.45)			2.24 (2.16 - 2.33)		
10.00	2.32 (2.23 - 2.40)			1.29 (1.22 - 1.35)			2.11 (2.03 - 2.19)		
20.00	2.06 (1.98 - 2.14)			1.14 (1.08 - 1.20)			1.87 (1.80 - 1.95)		
50.00	1.26 (1.20 - 1.33)			0.71 (0.66 - 0.76)			1.16 (1.10 - 1.22)		
Spam Misc%	Ham Misc%								
0.01	99.47 (99.07 - 99.70)			99.00 (98.23 - 99.44)			99.64 (99.39 - 99.79)		
0.02	99.20 (98.76 - 99.48)			98.39 (97.59 - 98.92)			99.23 (98.87 - 99.47)		
0.05	97.90 (97.28 - 98.38)			95.74 (94.35 - 96.80)			97.87 (97.18 - 98.40)		
0.10	96.06 (95.27 - 96.71)			92.28 (90.62 - 93.67)			95.78 (95.00 - 96.44)		
0.20	92.11 (90.96 - 93.13)			86.30 (84.38 - 88.02)			91.21 (90.02 - 92.27)		
0.50	81.34 (79.71 - 82.86)			64.85 (61.78 - 67.79)			79.50 (77.76 - 81.14)		
1.00	60.02 (57.91 - 62.09)			30.92 (26.79 - 35.37)			56.12 (53.62 - 58.59)		
2.00	22.36 (19.45 - 25.56)			0.73 (0.69 - 0.77)			14.65 (11.82 - 18.01)		
5.00	0.20 (0.18 - 0.22)			0.53 (0.50 - 0.56)			0.21 (0.19 - 0.23)		
10.00	0.19 (0.17 - 0.21)			0.50 (0.47 - 0.53)			0.20 (0.18 - 0.22)		
20.00	0.17 (0.15 - 0.19)			0.44 (0.42 - 0.47)			0.17 (0.15 - 0.19)		
50.00	0.11 (0.09 - 0.12)			0.28 (0.26 - 0.30)			0.11 (0.09 - 0.12)		



Learning Curves

