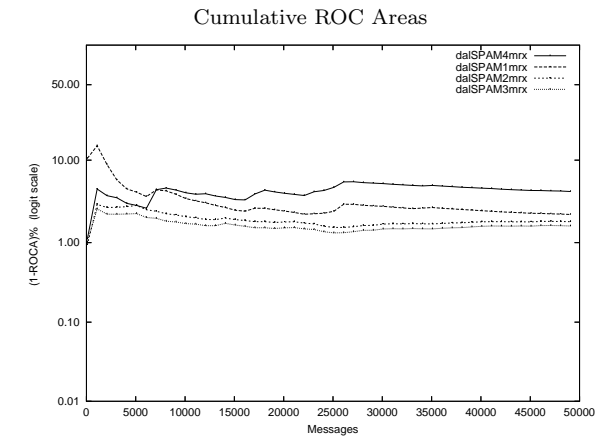
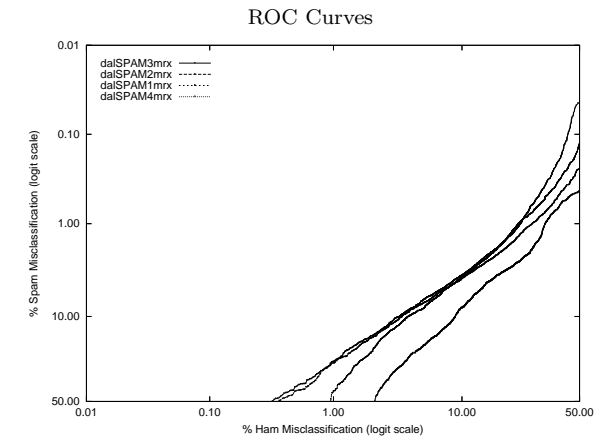


dal - Dalhousie U. on Private Mr X. Corpus

Gold Std. Filter Classification	dalSPAM1mrx		dalSPAM2mrx		dalSPAM3mrx		dalSPAM4mrx	
	ham spam	ham spam	ham spam	ham spam	ham spam	ham spam	ham spam	ham spam
Ham Misc%	1.17 (0.96-1.42)		3.12 (2.77-3.50)		3.44 (3.07-3.84)		2.18 (1.89-2.50)	
Spam Misc%	13.83 (13.50-14.18)		11.33 (11.02-11.65)		9.79 (9.50-10.09)		14.40 (14.06-14.75)	
Logit av Misc%	4.18 (3.81-4.59)		6.03 (5.69-6.39)		5.86 (5.54-6.19)		5.77 (5.39-6.17)	
(1-ROCA)%	2.240 (2.055 - 2.443)		1.824 (1.705 - 1.953)		1.613 (1.518 - 1.714)		4.282 (4.013 - 4.569)	
Ham Misc%	Spam Misc%							
0.01	99.44 (99.34 - 99.52)		99.95 (98.33 - 100.00)		99.97 (97.48 - 100.00)		98.63 (97.93 - 99.10)	
0.02	99.43 (99.32 - 99.51)		98.74 (56.23 - 99.98)		98.21 (40.46 - 99.98)		98.17 (97.21 - 98.81)	
0.05	99.41 (99.28 - 99.51)		85.09 (32.45 - 98.55)		84.54 (33.49 - 98.34)		97.49 (96.66 - 98.12)	
0.10	99.31 (99.18 - 99.43)		69.41 (58.30 - 78.64)		70.03 (48.55 - 85.26)		96.93 (96.01 - 97.65)	
0.20	99.15 (97.62 - 99.70)		57.52 (50.04 - 64.67)		57.14 (48.12 - 65.71)		95.12 (93.65 - 96.26)	
0.50	90.86 (81.99 - 95.59)		43.31 (38.63 - 48.10)		40.69 (34.91 - 46.74)		93.21 (92.14 - 94.13)	
1.00	43.74 (28.83 - 59.88)		27.07 (23.38 - 31.11)		26.35 (22.53 - 30.56)		89.29 (87.74 - 90.66)	
2.00	22.29 (18.48 - 26.64)		16.36 (14.66 - 18.21)		15.64 (14.32 - 17.05)		56.04 (44.02 - 67.38)	
5.00	8.55 (7.87 - 9.28)		7.52 (6.95 - 8.13)		6.99 (6.38 - 7.66)		19.95 (18.37 - 21.62)	
10.00	3.90 (3.61 - 4.22)		4.03 (3.71 - 4.36)		3.72 (3.49 - 3.95)		8.20 (7.54 - 8.90)	
20.00	1.55 (1.38 - 1.73)		1.90 (1.73 - 2.08)		1.54 (1.39 - 1.71)		3.32 (3.09 - 3.55)	
50.00	0.13 (0.09 - 0.18)		0.24 (0.20 - 0.29)		0.04 (0.03 - 0.08)		0.43 (0.37 - 0.50)	
Spam Misc%	Ham Misc%							
0.01	74.66 (60.90 - 84.79)		72.15 (65.09 - 78.26)		59.87 (51.35 - 67.83)		89.36 (88.41 - 90.23)	
0.02	70.58 (64.73 - 75.82)		69.14 (66.43 - 71.73)		53.70 (48.70 - 58.62)		89.13 (88.44 - 89.79)	
0.05	60.57 (53.98 - 66.79)		65.40 (62.34 - 68.34)		47.98 (44.58 - 51.39)		88.79 (87.73 - 89.78)	
0.10	53.36 (49.97 - 56.72)		59.85 (57.00 - 62.63)		44.56 (42.52 - 46.61)		86.40 (84.19 - 88.35)	
0.20	46.81 (43.87 - 49.78)		53.82 (50.98 - 56.63)		40.43 (37.96 - 42.95)		74.87 (66.54 - 81.70)	
0.50	34.70 (32.79 - 36.66)		40.12 (38.28 - 41.99)		31.88 (30.19 - 33.61)		45.38 (41.75 - 49.05)	
1.00	24.24 (22.95 - 25.58)		29.29 (27.29 - 31.37)		25.01 (23.75 - 26.30)		34.60 (33.15 - 36.08)	
2.00	17.07 (16.07 - 18.13)		19.25 (18.02 - 20.54)		16.77 (15.71 - 17.90)		28.76 (27.44 - 30.11)	
5.00	8.02 (7.40 - 8.69)		7.99 (7.37 - 8.65)		7.47 (6.92 - 8.06)		14.18 (13.37 - 15.04)	
10.00	3.99 (3.58 - 4.45)		3.52 (3.14 - 3.94)		3.35 (3.00 - 3.74)		8.97 (8.40 - 9.59)	
20.00	2.15 (1.85 - 2.49)		1.57 (1.34 - 1.85)		1.41 (1.19 - 1.66)		4.98 (4.57 - 5.42)	
50.00	0.95 (0.77 - 1.17)		0.37 (0.27 - 0.50)		0.32 (0.22 - 0.47)		2.14 (1.86 - 2.45)	



Learning Curves

