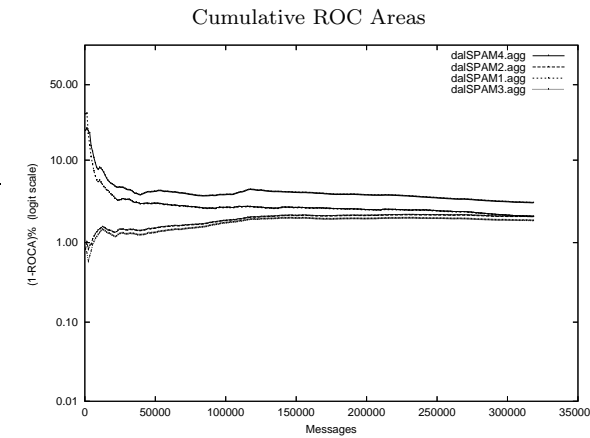
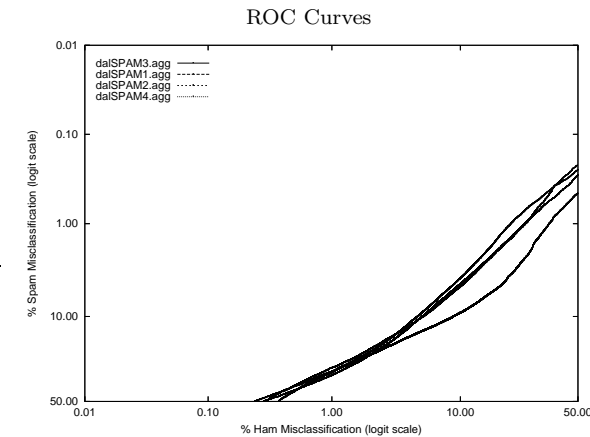


dal - Dalhousie U. on Aggregate of full, mrx, sb, tm Corpus

Gold Std. Filter Classification	dalSPAM1.agg			dalSPAM2.agg			dalSPAM3.agg			dalSPAM4.agg		
	ham spam	ham spam	spam ham	ham spam	ham spam	spam ham	ham spam	ham spam	spam ham	ham spam	ham spam	
Ham Misc%	0.92 (0.88-0.96)			5.40 (5.30-5.50)			5.44 (5.35-5.54)			2.92 (2.85-2.99)		
Spam Misc%	18.93 (18.70-19.16)			9.64 (9.47-9.82)			8.65 (8.48-8.81)			11.66 (11.47-11.85)		
Logit av Misc%	4.44 (4.34-4.54)			7.24 (7.15-7.33)			6.87 (6.79-6.97)			5.93 (5.84-6.01)		
(1-ROCA)%	2.097 (2.053 - 2.141)			2.100 (2.060 - 2.141)			1.873 (1.834 - 1.913)			3.115 (3.062 - 3.170)		
Ham Misc%										Spam Misc%		
0.01	99.64 (99.59 - 99.69)			78.85 (75.82 - 81.58)			79.93 (75.80 - 83.50)			90.33 (87.59 - 92.52)		
0.02	99.57 (99.51 - 99.62)			74.19 (71.97 - 76.29)			72.40 (69.77 - 74.89)			86.54 (84.74 - 88.16)		
0.05	99.42 (99.34 - 99.49)			66.35 (64.95 - 67.73)			65.71 (64.47 - 66.92)			80.52 (78.26 - 82.60)		
0.10	99.15 (98.52 - 99.52)			60.64 (59.13 - 62.13)			59.50 (57.78 - 61.18)			79.14 (78.90 - 79.37)		
0.20	65.19 (59.67 - 70.33)			54.23 (53.08 - 55.37)			51.98 (51.06 - 52.91)			73.02 (68.72 - 76.93)		
0.50	39.95 (38.96 - 40.94)			43.04 (42.26 - 43.83)			40.46 (39.55 - 41.38)			43.81 (42.55 - 45.07)		
1.00	29.66 (29.07 - 30.24)			33.92 (33.26 - 34.60)			31.74 (31.09 - 32.39)			32.34 (31.69 - 32.99)		
2.00	20.72 (20.29 - 21.17)			23.57 (23.10 - 24.05)			22.03 (21.54 - 22.53)			23.26 (22.91 - 23.63)		
5.00	10.56 (10.34 - 10.79)			10.44 (10.17 - 10.72)			9.55 (9.28 - 9.83)			14.33 (14.08 - 14.58)		
10.00	4.93 (4.79 - 5.07)			4.62 (4.46 - 4.78)			3.99 (3.87 - 4.12)			9.25 (9.07 - 9.44)		
20.00	1.74 (1.65 - 1.83)			1.69 (1.63 - 1.76)			1.22 (1.16 - 1.28)			4.49 (4.35 - 4.64)		
50.00	0.22 (0.20 - 0.25)			0.29 (0.26 - 0.32)			0.25 (0.22 - 0.29)			0.46 (0.42 - 0.51)		
Spam Misc%										Ham Misc%		
0.01	100.00 (nan - nan)			85.38 (81.29 - 88.70)			87.63 (83.81 - 90.65)			100.00 (nan - nan)		
0.02	100.00 (nan - nan)			81.54 (78.37 - 84.34)			84.54 (80.63 - 87.78)			100.00 (nan - nan)		
0.05	98.46 (nan - nan)			72.96 (70.23 - 75.52)			74.33 (71.36 - 77.09)			98.78 (nan - nan)		
0.10	70.46 (63.72 - 76.40)			65.46 (63.08 - 67.75)			65.31 (62.89 - 67.66)			83.60 (77.33 - 88.39)		
0.20	53.32 (49.48 - 57.12)			56.06 (54.10 - 58.00)			54.77 (52.76 - 56.77)			68.89 (65.56 - 72.03)		
0.50	36.42 (35.32 - 37.54)			39.73 (38.06 - 41.43)			33.87 (32.18 - 35.60)			48.28 (46.67 - 49.89)		
1.00	27.47 (26.53 - 28.44)			27.17 (26.49 - 27.86)			22.29 (21.64 - 22.96)			37.01 (36.25 - 37.78)		
2.00	18.35 (17.75 - 18.96)			18.11 (17.70 - 18.53)			15.50 (15.09 - 15.91)			29.26 (28.78 - 29.75)		
5.00	9.91 (9.70 - 10.12)			9.35 (9.13 - 9.58)			8.47 (8.26 - 8.67)			18.54 (18.06 - 19.03)		
10.00	5.34 (5.21 - 5.47)			5.22 (5.08 - 5.36)			4.79 (4.67 - 4.91)			8.97 (8.74 - 9.20)		
20.00	2.12 (2.05 - 2.18)			2.52 (2.44 - 2.60)			2.31 (2.23 - 2.39)			2.71 (2.62 - 2.80)		
50.00	0.30 (0.27 - 0.33)			0.28 (0.26 - 0.31)			0.24 (0.22 - 0.26)			0.37 (0.35 - 0.40)		



Learning Curves

