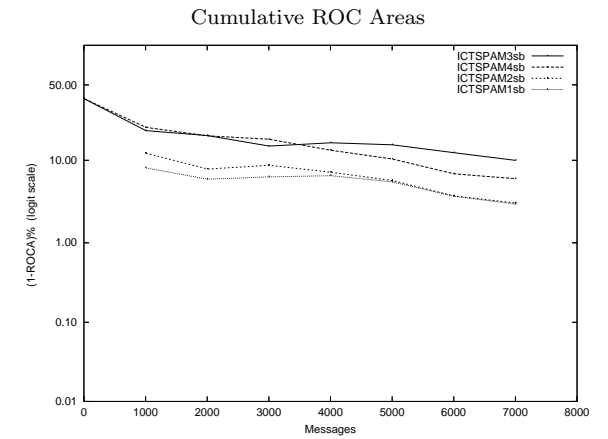
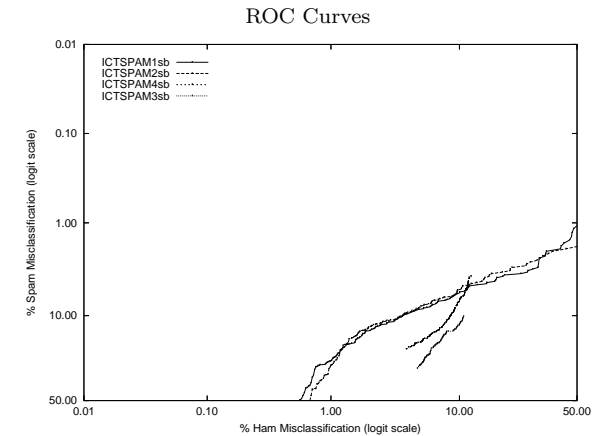


ICT - Chinese Academy of Sciences (ICT) on Private S.B. Corpus

Gold Std. Filter Classification	ICTSPAM1sb		ICTSPAM2sb		ICTSPAM3sb		ICTSPAM4sb	
	ham	spam	ham	spam	ham	spam	ham	spam
ham	6168	140	6164	122	5819	150	5838	116
spam	63	635	67	653	412	625	393	659
Ham Misc%	1.01 (0.78-1.29)		1.08 (0.83-1.36)		6.61 (6.01-7.26)		6.31 (5.72-6.94)	
Spam Misc%	18.06 (15.42-20.96)		15.74 (13.25-18.50)		19.35 (16.63-22.32)		14.97 (12.53-17.68)	
Logit av Misc%	4.53 (3.91-5.25)		4.31 (3.72-5.00)		11.53 (10.53-12.62)		9.82 (8.88-10.85)	
(1-ROCA)%	3.023 (2.338 - 3.900)		3.110 (2.429 - 3.975)		9.985 (8.711 - 11.423)		6.112 (5.139 - 7.256)	
Ham Misc%	Spam Misc%							
0.01	99.87 (nan - nan)		99.87 (nan - nan)		100.00 (nan - nan)		100.00 (nan - nan)	
0.02	99.74 (nan - nan)		99.87 (nan - nan)		99.48 (nan - nan)		99.35 (nan - nan)	
0.05	99.74 (nan - nan)		99.74 (nan - nan)		98.84 (nan - nan)		98.32 (94.23 - 99.53)	
0.10	97.55 (nan - nan)		99.35 (nan - nan)		98.71 (nan - nan)		97.03 (92.86 - 98.80)	
0.20	92.39 (66.12 - 98.69)		97.29 (75.38 - 99.76)		97.42 (93.92 - 98.93)		95.74 (92.38 - 97.66)	
0.50	51.87 (36.43 - 66.96)		63.48 (43.62 - 79.62)		94.71 (91.95 - 96.56)		90.19 (85.47 - 93.50)	
1.00	26.45 (20.73 - 33.09)		28.77 (19.00 - 41.03)		89.03 (85.48 - 91.80)		79.10 (72.88 - 84.20)	
2.00	14.19 (11.47 - 17.43)		13.29 (10.82 - 16.22)		74.06 (69.16 - 78.43)		62.84 (54.67 - 70.34)	
5.00	8.65 (6.74 - 11.02)		8.39 (6.50 - 10.75)		29.03 (24.15 - 34.45)		18.32 (15.77 - 21.19)	
10.00	5.94 (4.32 - 8.10)		5.42 (3.89 - 7.50)		13.16 (10.98 - 15.69)		7.10 (5.31 - 9.43)	
20.00	4.00 (2.76 - 5.76)		3.48 (2.38 - 5.07)		11.10 (9.14 - 13.41)		5.94 (4.47 - 7.84)	
50.00	1.16 (0.55 - 2.44)		1.94 (1.18 - 3.15)		6.45 (5.07 - 8.18)		3.61 (2.52 - 5.16)	
Spam Misc%	Ham Misc%							
0.01	100.00 (nan - nan)		100.00 (nan - nan)		100.00 (nan - nan)		100.00 (nan - nan)	
0.02	100.00 (nan - nan)		100.00 (nan - nan)		100.00 (nan - nan)		100.00 (nan - nan)	
0.05	100.00 (nan - nan)		100.00 (nan - nan)		100.00 (nan - nan)		100.00 (nan - nan)	
0.10	93.28 (85.32 - 97.07)		98.59 (94.50 - 99.65)		99.25 (nan - nan)		97.21 (76.97 - 99.73)	
0.20	85.41 (70.79 - 93.40)		96.79 (83.24 - 99.46)		98.49 (88.28 - 99.82)		95.59 (82.57 - 99.00)	
0.50	85.19 (68.49 - 93.83)		90.32 (61.67 - 98.19)		97.98 (93.40 - 99.40)		90.37 (75.96 - 96.54)	
1.00	63.76 (37.77 - 83.61)		69.92 (49.45 - 84.68)		95.51 (90.40 - 97.96)		84.50 (71.95 - 92.05)	
2.00	42.34 (30.37 - 55.27)		44.94 (22.59 - 69.53)		87.66 (79.80 - 92.74)		75.24 (59.97 - 86.04)	
5.00	11.75 (6.60 - 20.05)		10.54 (6.64 - 16.35)		68.27 (57.18 - 77.61)		28.21 (12.63 - 51.66)	
10.00	3.76 (2.56 - 5.49)		3.74 (2.45 - 5.68)		25.53 (14.52 - 40.90)		8.70 (7.61 - 9.93)	
20.00	1.28 (0.96 - 1.71)		1.25 (0.98 - 1.59)		6.42 (5.53 - 7.44)		4.25 (3.42 - 5.27)	
50.00	0.56 (0.39 - 0.81)		0.69 (0.49 - 0.97)		3.53 (3.12 - 3.99)		2.68 (2.27 - 3.16)	



Learning Curves

