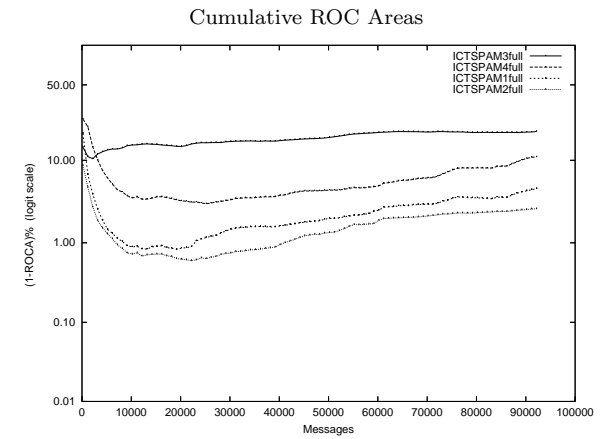
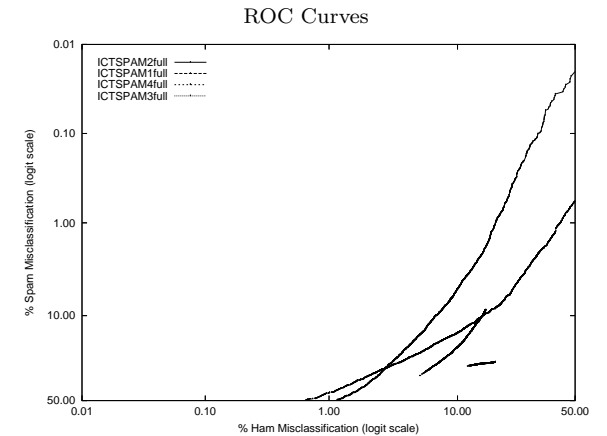


ICT - Chinese Academy of Sciences (ICT) on Public trec05p-1/full Corpus

Gold Std. Filter Classification	ICTSPAM1full			ICTSPAM2full			ICTSPAM3full			ICTSPAM4full		
	ham	spam	spam	ham	spam	spam	ham	spam	spam	ham	spam	
Filter	ham	37158	11006	ham	36119	4241	ham	33842	14897	ham	36177	13141
Classification	spam	2241	41784	spam	3280	48549	spam	5557	37893	spam	3222	39649
Ham Misc%	5.69 (5.46-5.92)			8.33 (8.05-8.60)			14.10 (13.76-14.45)			8.18 (7.91-8.45)		
Spam Misc%	20.85 (20.50-21.20)			8.03 (7.80-8.27)			28.22 (27.84-28.61)			24.89 (24.52-25.26)		
Logit av Misc%	11.19 (10.96-11.43)			8.18 (8.00-8.36)			20.26 (19.99-20.54)			14.66 (14.41-14.92)		
(1-ROCA)%	4.659 (4.545 - 4.775)			2.643 (2.544 - 2.746)			20.485 (20.213 - 20.759)			10.952 (10.698 - 11.211)		
Ham Misc%	Spam Misc%											
0.01	96.34 (83.48 - 99.27)	91.73 (87.97 - 94.39)	99.95 (99.87 - 99.98)	99.89 (99.77 - 99.95)	99.89 (99.47 - 99.86)	99.31 (98.98 - 99.53)						
0.02	91.81 (84.62 - 95.81)	91.16 (89.74 - 92.41)	99.89 (99.77 - 99.95)	99.89 (99.77 - 99.95)	99.73 (99.47 - 99.86)	99.31 (98.98 - 99.53)						
0.05	80.47 (75.60 - 84.56)	88.29 (83.79 - 91.66)	99.71 (99.56 - 99.80)	99.71 (99.56 - 99.80)	99.31 (98.98 - 99.53)	99.31 (98.98 - 99.53)						
0.10	72.26 (66.40 - 77.44)	79.51 (76.50 - 82.22)	99.39 (99.14 - 99.57)	99.39 (99.14 - 99.57)	98.44 (97.95 - 98.82)	98.44 (97.95 - 98.82)						
0.20	61.57 (58.91 - 64.16)	72.22 (68.47 - 75.68)	98.68 (98.33 - 98.96)	98.68 (98.33 - 98.96)	97.30 (96.70 - 97.80)	97.30 (96.70 - 97.80)						
0.50	53.94 (52.25 - 55.62)	59.09 (57.96 - 60.20)	96.86 (96.34 - 97.31)	96.86 (96.34 - 97.31)	93.92 (93.08 - 94.67)	93.92 (93.08 - 94.67)						
1.00	45.19 (44.07 - 46.31)	52.25 (50.25 - 54.25)	94.10 (93.47 - 94.66)	94.10 (93.47 - 94.66)	87.77 (86.39 - 89.02)	87.77 (86.39 - 89.02)						
2.00	35.25 (34.05 - 36.48)	40.16 (38.17 - 42.18)	88.73 (87.86 - 89.55)	88.73 (87.86 - 89.55)	75.30 (73.53 - 76.99)	75.30 (73.53 - 76.99)						
5.00	23.21 (22.68 - 23.74)	16.23 (15.23 - 17.27)	70.40 (69.04 - 71.71)	70.40 (69.04 - 71.71)	37.11 (34.18 - 40.13)	37.11 (34.18 - 40.13)						
10.00	14.86 (14.42 - 15.31)	5.31 (4.99 - 5.64)	40.31 (38.49 - 42.16)	40.31 (38.49 - 42.16)	20.25 (19.52 - 21.00)	20.25 (19.52 - 21.00)						
20.00	7.64 (7.32 - 7.98)	0.77 (0.69 - 0.86)	26.68 (26.27 - 27.10)	26.68 (26.27 - 27.10)	11.95 (11.67 - 12.23)	11.95 (11.67 - 12.23)						
50.00	0.58 (0.52 - 0.65)	0.02 (0.01 - 0.04)	16.27 (15.91 - 16.63)	16.27 (15.91 - 16.63)	7.38 (7.14 - 7.63)	7.38 (7.14 - 7.63)						
Spam Misc%	Ham Misc%											
0.01	99.76 (97.89 - 99.97)	60.66 (51.46 - 69.16)	99.95 (99.86 - 99.98)	99.95 (99.86 - 99.98)	99.91 (99.78 - 99.96)							
0.02	97.53 (90.95 - 99.36)	50.92 (44.11 - 57.69)	99.90 (99.78 - 99.95)	99.90 (99.78 - 99.95)	99.89 (99.78 - 99.95)							
0.05	88.29 (80.89 - 93.07)	38.55 (34.24 - 43.04)	99.87 (99.79 - 99.91)	99.87 (99.79 - 99.91)	99.60 (99.39 - 99.73)							
0.10	79.61 (74.59 - 83.84)	34.07 (31.60 - 36.62)	99.71 (99.60 - 99.79)	99.71 (99.60 - 99.79)	99.42 (99.22 - 99.57)							
0.20	67.00 (64.76 - 69.17)	28.33 (26.69 - 30.03)	99.45 (99.31 - 99.57)	99.45 (99.31 - 99.57)	98.84 (98.59 - 99.04)							
0.50	52.26 (49.67 - 54.84)	22.58 (21.85 - 23.32)	98.56 (98.34 - 98.75)	98.56 (98.34 - 98.75)	97.00 (96.65 - 97.31)							
1.00	43.32 (42.11 - 44.53)	18.43 (17.90 - 18.98)	97.09 (96.77 - 97.38)	97.09 (96.77 - 97.38)	93.42 (92.81 - 93.97)							
2.00	34.74 (33.67 - 35.84)	15.37 (14.95 - 15.80)	93.91 (93.48 - 94.32)	93.91 (93.48 - 94.32)	86.90 (86.08 - 87.67)							
5.00	24.45 (23.92 - 24.99)	10.30 (10.01 - 10.61)	84.83 (84.14 - 85.50)	84.83 (84.14 - 85.50)	66.19 (64.81 - 67.54)							
10.00	15.23 (14.78 - 15.70)	6.94 (6.62 - 7.28)	69.55 (68.66 - 70.42)	69.55 (68.66 - 70.42)	33.24 (31.40 - 35.13)							
20.00	6.35 (6.09 - 6.61)	4.23 (4.01 - 4.47)	39.67 (38.55 - 40.80)	39.67 (38.55 - 40.80)	10.13 (9.79 - 10.47)							
50.00	0.65 (0.57 - 0.74)	1.16 (1.06 - 1.27)	8.28 (7.99 - 8.58)	8.28 (7.99 - 8.58)	4.01 (3.81 - 4.21)							



Learning Curves

